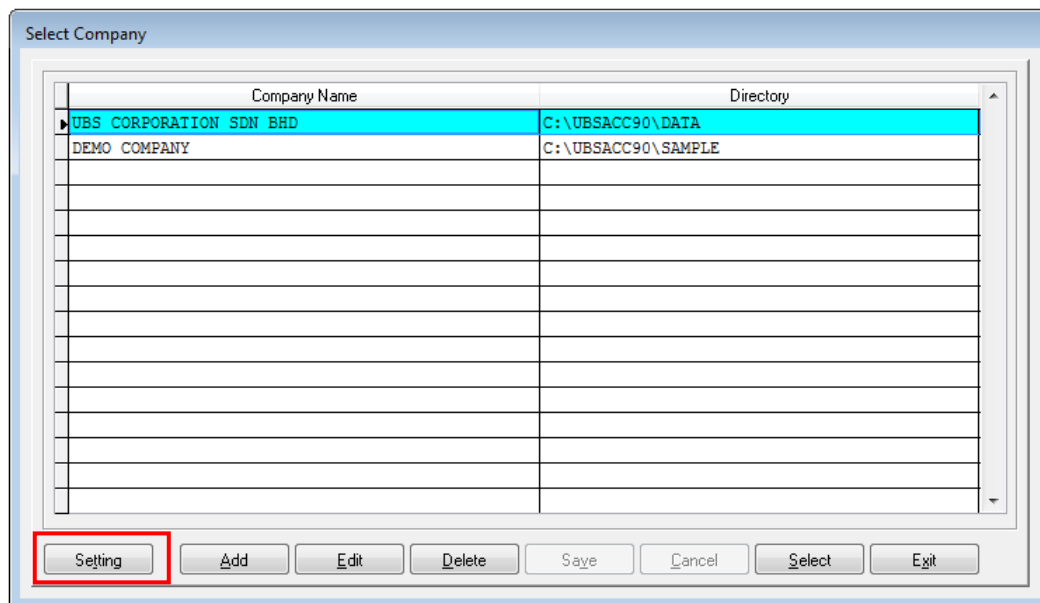


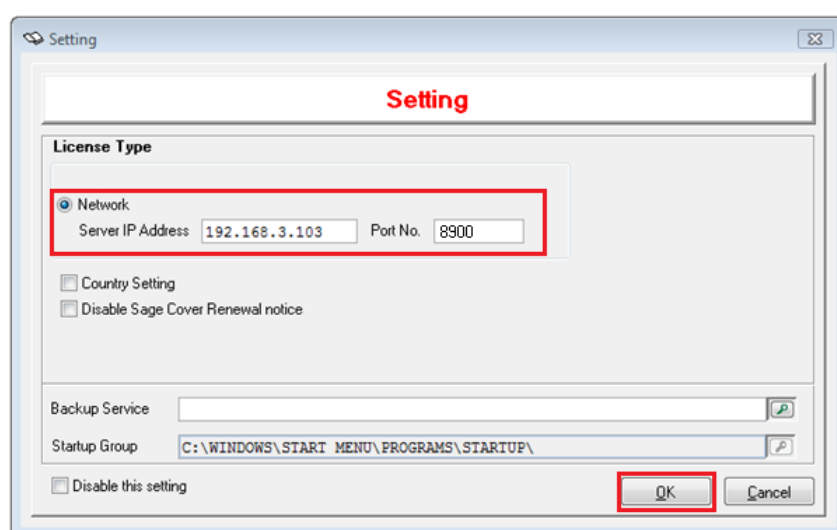
## Sage UBS nine Ultimate – License Detection for Multi-users environment

### At the server

1. After the license has been activated successfully. In the **Select Company** screen, click **Setting**.

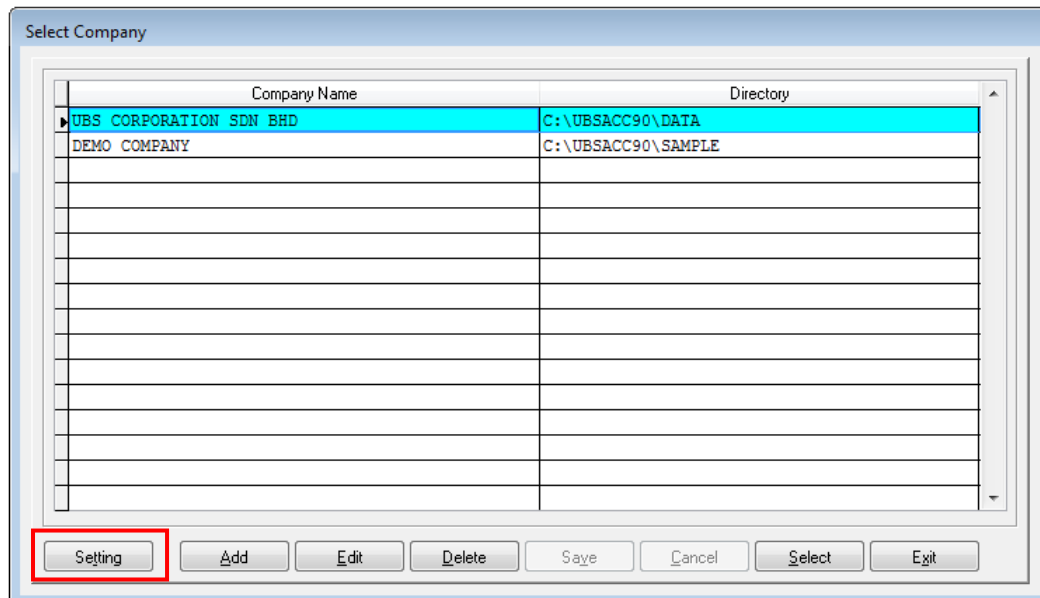


2. Select **Network**, enter the IP of the server and port number – 8900. Click **OK**.

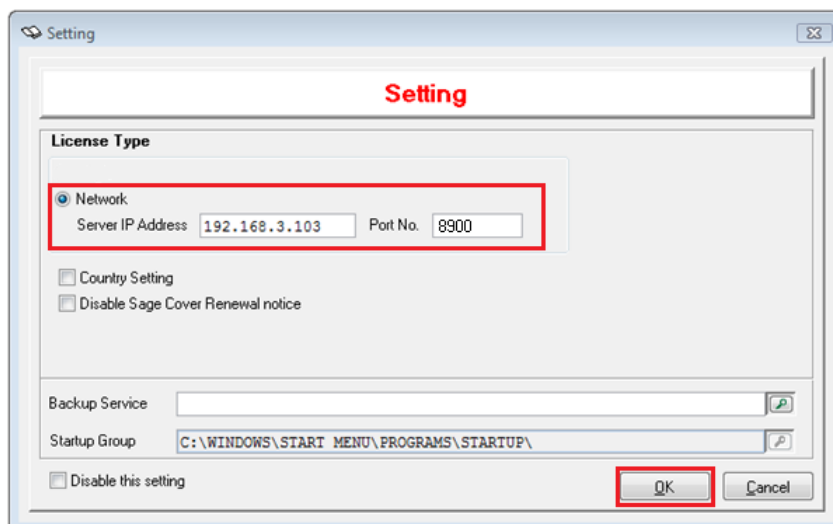


**At the client**

1. In the **Select Company** screen, click **Setting**.



2. Select **Network**, enter the IP of the server and port number – 8900. Click **OK**.



\*\*\* The End \*\*\*